



**SHRI SANGAMESHWAR SHIKSHANA SAMSTHA'S
SHRI SANGAMESHWAR ARTS, COMMERCE, BCA, BSW &
PG (M.COM. & MSW) COLLEGE, CHADCHAN- 586 205
(AFFILIATED TO RANI CHANNAMMA UNIVERSITY BELAGAVI)**



CRITERION VII – INSTITUTIONAL VALUES AND BEST PRACTICES

Key Indicator - 7.1 Institutional Values and Social Responsibilities

7.1.3 - Describe the facilities in the Institution for the management of the following types of degradable and non-degradable waste (within 200 words)

1. Solid waste management
2. Liquid waste management
3. Biomedical waste management
4. E-waste management
5. Waste recycling system
6. Hazardous chemicals and radioactive waste management



Principal

**Shri Sangameshwar Arts & Comm. College
CHADCHAN-586-205. (Dist. vijayapur)**

7.1.3 - Describe the facilities in the Institution for the management of the following types of degradable and non-degradable waste (within 200 words)

1. Solid waste management
2. Liquid waste management
3. Biomedical waste management
4. E-waste management
5. Waste recycling system
6. Hazardous chemicals and radioactive waste management

The college facilitates several techniques for the management of degradable and non-degradable waste. The primary focus is to reduce, reuse and recycle the waste. The college management has also advised to refuse anything which is not needed. The college has different dustbins to segregate the different Solid waste management, Liquid waste management, Biomedical waste management, E-waste management AND Waste recycling system, etc. It is also advised that the college should use utensils made of glass and metal.

For solid waste management different bins have been placed at different departments. It is also ensured that the recycling of all these components is done in minimum cost and labour. Suitable techniques are applied for disposing of solid waste.

Moreover, wearing head gears, eye covers, apron, gloves and boots as they help in fighting the transmission of infection. The NSS volunteers have also demonstrated the proper procedure of disposing the waste in Chadchan. Waste recycling involves the collection of waste materials and segregation of the waste material. The university has set up a recycling programme to meet the need of recycling the waste. Hence, SSAC is determined to provide all possible facilities to deal with the degradable and non-degradable waste.



A handwritten signature in green ink, consisting of a large loop and a horizontal stroke.

Principal

Shri Sangameshwar Arts & Comm. College
CHADCHAN-586-205. (Dist. vitavapur)

1. SOLID WASTE MANAGEMENT

WET WASTE AND DRY WASTE



DRY WASTE COLLECTION-PATTANA PANCHAYAT, CHADCHAN



Principal

Shri Sangameshwar Arts & Comm. College
CHADCHAN-586-205. (Dist. Vijayapur)

2. LIQUID WASTE MANAGEMENT



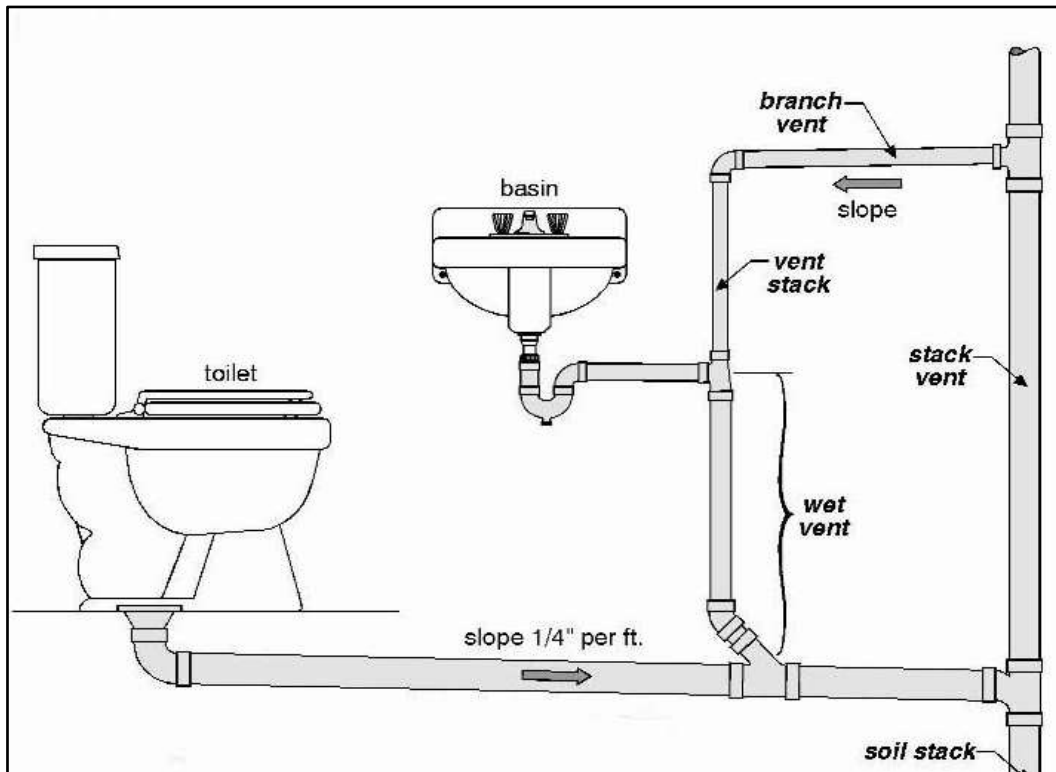
PIPELINE AND DRAINAGE FACILITIES FOR TOILET



Principal

Shri Sangameshwar Arts & Comm. College
CHADCHAN-586-205. (Dist. Vijayanpur)

SANITATION AND LIQUID WASTE MANAGEMENT



DRAINAGE SYSTEM



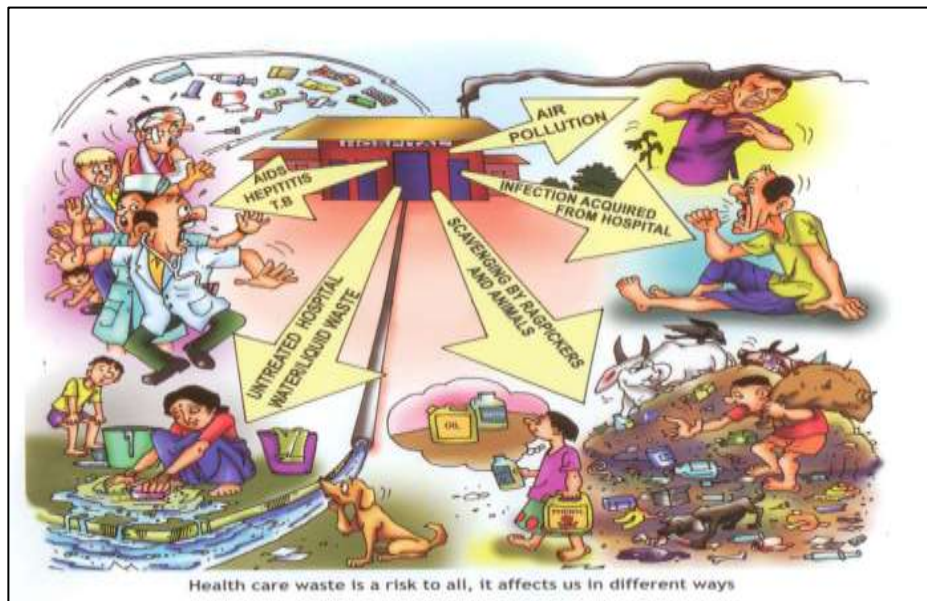
Principal

Shri Sangameshwar Arts & Comm. College
CHADCHAN-586-205. (Dist. vijayapur)

3. BIOMEDICAL WASTE MANAGEMENT

Our institution not generating any Biomedical waste and there are no issues of waste management. Moreover, our college collaborated with Community Health Center, Chadchan. Our NCC, NSS and YRC unit are actively participating in workshop, awareness programmes on **BIOMEDICAL WASTE MANAGEMENT**. These activities are helping to reduce adverse effect to human health and environment. Now it is a well-established hospital in management waste in protection of health care workers, public and flora and fauna of the area.

BIOMEDICAL WASTE MANAGEMENT



COMMUNITY HEALTH CENTER, CHADCHAN



Principal

Shri Sangameshwar Arts & Comm. College
CHADCHAN-586-205. (Dist. vitavapur)

4. E-WASTE MANAGEMENT



E-WASTE STORAGE



Principal
Shri Sangameshwar Arts & Comm. College
CHADCHAN-586-205. (Dist. vijayapur)

5. WASTE RECYCLING SYSTEM



Principal

Shri Sangameshwar Arts & Comm. College
CHADCHAN-586-205. (Dist. vitavapur)

WASTE MANAGEMENT ACTIVITIES



Principal

Shri Sangameshwar Arts & Comm. College
CHADDHAN-586-205. (Dist. Vtavadi)

NSS ACTIVITIES



ACTION PLAN 2020-2021

Year	Programme	Responsibility / Action By	Time line
2020-21	Awareness Programme on Total Solid Waste Management	Class room activity by NSS/YRC	Every year
2020-21	Solid and Liquid Waste Management in Rural Areas	Class room activity by NSS/YRC	Every year



Principal

Shri Sangameshwar Arts & Comm. College
CHADCHAN-586-205. (Dist. Vijayanpur)

WASTE RECYCLING SYSTEM



6. HAZARDOUS CHEMICALS AND RADIOACTIVE WASTE MANAGEMENT

Our institution not generating any Hazardous Chemicals and Radioactive Waste and there are no issues of waste management. Though, the disposal of radioactive waste is defined as the emplacement of waste in an approved specific facility that is intended to isolate the waste from human and environment and to prevent or limit a release of potentially harmful substances such that human health and the environment are protected.

Managing Radioactive Waste

- Storage and disposal of radioactive waste is strictly regulated.
- All radioactive waste must be transferred to Environment, Health & Safety (EH&S) for disposal.
- Do not dispose of radioactive waste in regular trash cans or pour it down drains.



Principal

Shri Sangameshwar Arts & Comm. College
CHACHAN-586-205. (Dist. vitavapur)